



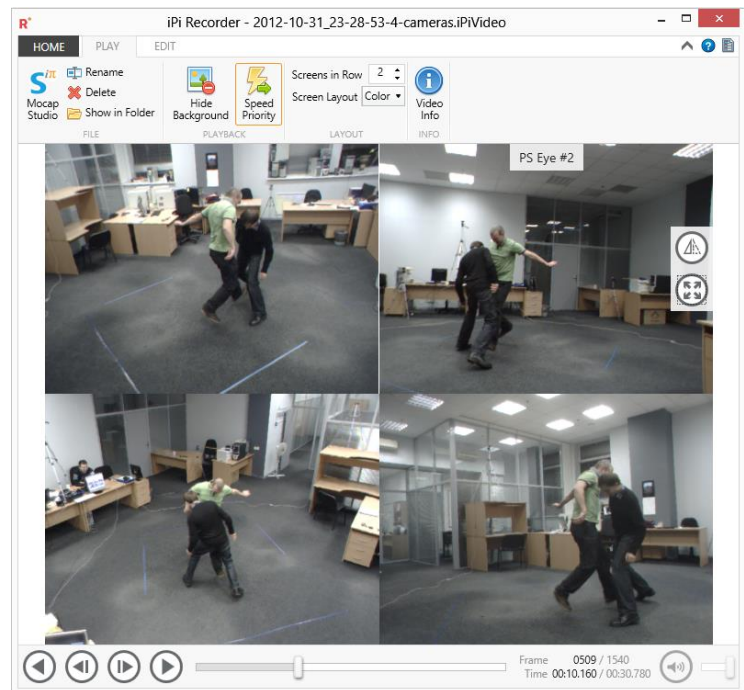
## iPi Soft Unveils iPi Motion Capture Version 3.0

*Next Generation Markerless Motion Capture Solution Features Support For Kinect 2 Sensor, Tracking Speed Increase And A New Subscription Payment Model*

MOSCOW, RUSSIA November 6, 2014 – [iPi Soft, LLC](#), developers of the [iPi Motion Capture](#) line of markerless motion capture technology, today announced the availability of [iPi Motion Capture Version 3.0](#). The next generation motion capture solution delivers a number of impressive new features for improved workflow, including support for the new Microsoft Kinect 2 sensor, increased tracking speed, improved arm and leg tracking and a simplified calibration process that gives even entry level motion capture enthusiasts the ability to obtain quality mocap data easily and quickly.



**Kinect 2 Sensors**



**iPi Recorder Redesigned User Interface**

Additionally, iPi Soft has unveiled a new subscription payment model with options for a year subscription for frequent software users or a three-month plan for those that only need the software on a limited per-project basis.

“The latest enhancements in iPi Motion Capture V 3.0 coupled with support for Microsoft’s Kinect 2 sensor delivers an elevated experience to creative professionals and enthusiasts, and introduction of the new subscription pricing model makes our solution even more affordable,” **Michael Nikonov**, iPi Soft’s Founder/Chief Technology Architect, says. “The faster algorithms, simplified calibration and improved limbs tracking will give our customers -- amateurs, pros and everyone in between -- powerful performance tools to express their creativity.”

Nikonov notes that iPi Motion Capture V 3.0’s compatibility with the Microsoft Kinect 2 sensor lets users get closer to the camera, thus further reducing overall space requirements, while new calibration algorithms simplifies the camera set up process and ensures more accurate tracking.

### **Key Highlights in iPi Motion Capture Version 3.0**

With the new iPi Motion Capture Version 3.0, customers can take advantage of:

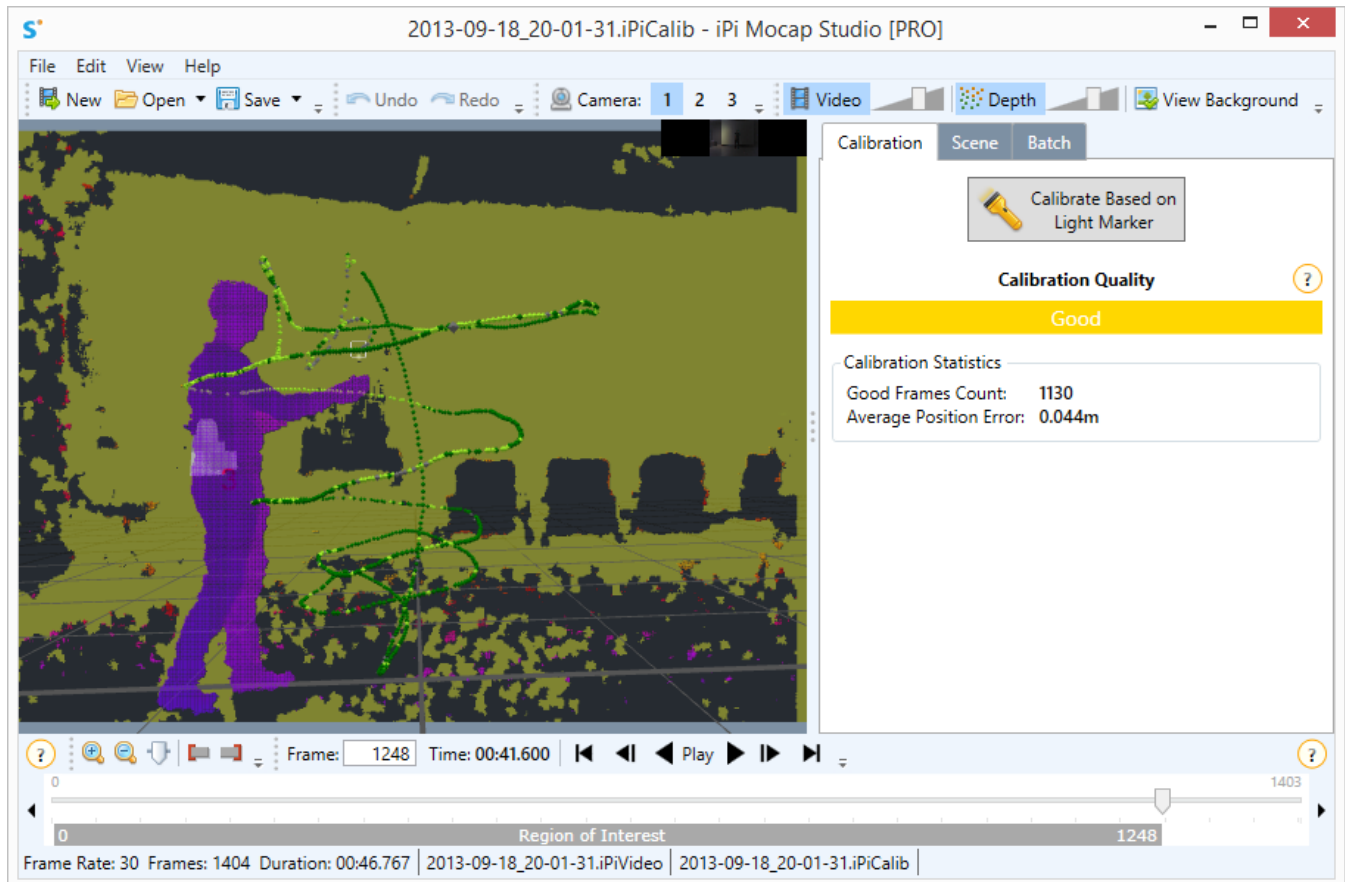
- 10-20% faster tracking algorithms
- Improved calibration of multi-camera system with no need to manually align cameras. Also, comprehensive feedback on calibration quality can save a lot of time preventing use of incorrect calibration data for tracking.
- Improved tracking for arms and legs with less tracking errors.
- Redesigned user interface

Additionally, there are several features related to the Kinect 2 sensor that iPi Soft plans to offer users in the near future. These include distributed recording (which will allow recording multiple Kinect 2 sensors using several PCs); up to 12-camera support; substantially increased tracking speed; selected limb cleanup; and three actor tracking.

The new version of iPi Motion Capture comes on the heels of growing industry acceptance among some of the industry's leading entertainment production companies and videogame developers, including **Rodeo FX**, **The Graphics Film Company** and **Ghost Town Media**.

**Brandon Parvini**, Creative Director at LA-based post-production studio **Ghost Town Media**, notes that iPi Motion Capture is extremely intuitive and takes just a half an hour to setup and calibrate. With 3.0, he looks forward to reduced setup time and improved tracking.

“Our experience with iPi Soft has been great,” Parvini says. “The software has become an important part of our new pipeline and we’re currently using it extensively on a new high-profile feature film project. iPi Motion Capture is part of a small crop of 'new-school' platforms that are helping to move the industry forward.”



**iPi Mocap Studio Redesigned User Interface**

## **Pricing and Availability:**

Beginning with iPi Motion Capture V 3.0, iPi Soft is introducing a subscription-based pricing model. Prices range from \$45.00 to \$1,195.00 depending on the version of software (Express, Basic, Pro) and duration of subscription. Customers who purchased iPi Motion Capture Version 2 software after July 1st, 2014 will receive a free 1-year subscription of Version 3. Customers with iPi Motion Capture Version 2 or Version 1 will receive a one-time 50-percent discount for a 1-year subscription of Version 3. Upgrading to Version 3 is optional, and a free 30-days trial for Version 3 is available here: <http://ipisoft.com/download/>

Early adopters can take advantage of iPi Soft's 30-percent discount offer for a one-year subscription available through Nov 30<sup>th</sup>. More info about the discount is available here: <http://ipisoft.com/2014/11/version-3-welcome-discount/>.

Additional details about iPi Soft's new version and multi-tiered subscription pricing can be found here: <http://ipisoft.com/store/version-3-0/>

## **About iPi Soft:**

*Launched in 2008 by CEO and Chief Technology Architect Michael Nikonov, iPi Soft, LLC is the Moscow-based developer of iPi Motion Capture™, a markerless motion capture software tool that uses sophisticated image processing and computer vision algorithms to recognize and track the human body. The company's breakthrough technology digitizes the movement of a human skeleton, rendering it in expressive 3D characters for video games or computer generated films. For additional information, on iPi Soft, product pricing or a 30-day free trial please visit, <http://www.ipisoft.com>.*

*All trademarks contained herein are the property of their respective owners.*

## **Media Contacts:**

Ambient PR, Vicky Gray-Clark, [vicky@ambientpr.com](mailto:vicky@ambientpr.com), 408-318-1980  
Right Word Media, Ray Ecke, [ray@rightwordmedia.com](mailto:ray@rightwordmedia.com), 973-726-3797